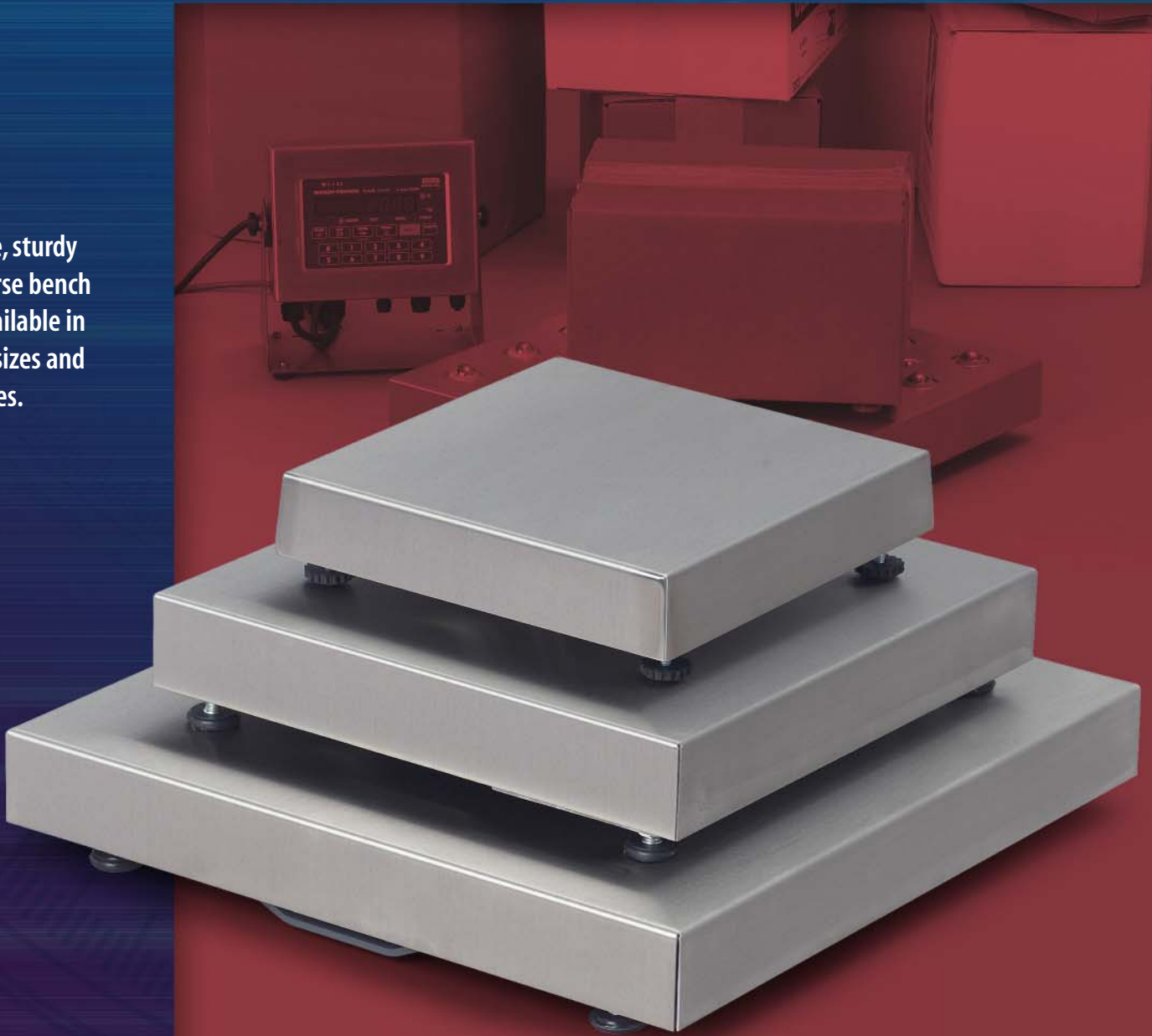


# Avery Weigh-Tronix

## 3700LP Bench Bases

A simple, sturdy workhorse bench base available in several sizes and capacities.



## Features & Benefits:

**Connects to external indicators** – Connects to a variety of Avery Weigh-Tronix indicators, such as the WI-125 (shown below).

**Convenient selection of sizes** – Choose from 3 sizes with capacities from 10 to 250 lbs to fit the needs of any application.

**Stainless steel shroud** – Resists corrosion and makes cleaning easy.

**Reliable** – Low maintenance. Single load cell design with no moving parts.

**Durabridge construction** – (on 250 lb base) Less than 1/2" of deflection in the base. Minimizes shock load and off-center loading error.

## Options:

**Ball top kit** – Ideal for in-line conveyor applications. Minimizes lifting and speeds processing.

**Extended cable length** – For applications that require more than the standard 10' of interface cable.

## Specifications:

Base Model	Capacity Lb (kg)	Overall Dimensions	Resolution Lb (g)
3731LP	10 (5)	10.4" x 10.4" x 2.5"	.002 (1)
3731LP	25 (10)	10.4" x 10.4" x 2.5"	.005 (2)
3731LP	50 (25)	10.4" x 10.4" x 2.5"	.01 (5)
3733LP	100 (50)	14" x 14" x 3.1"	.02 (10)
3733LP	250 (100)	14" x 14" x 3.1"	.05 (20)
3735LP	100 (50)	18" x 18" x 3.2"	.02 (10)
3735LP	250 (100)	18" x 18" x 3.2"	.05 (20)

**Cable length** – All bases come with 10 feet of four conductor interface cable.

**Excitation** – Up to 15 VDC (generated by weight display).

**Output** – 2mV/V.

**Overload** – Up to 200% of scale rated capacity.

**Operating environment** – 41°F to 104°F (5°C to 40°C).  
10 to 95% relative humidity, non-condensing.

**Agencies** –  
NTEP Pending (5,000 divisions Class III, C.O.C. # 02-069), UL/CUL



3735LP model shown with optional Avery Weigh-Tronix WI-125 indicator.

## AUTHORIZED DISTRIBUTORS

### Ask the experts.

Weigh-Tronix distributors are complete support centers, providing needs assessment, technical information, product sales and service. Their experience is a valuable resource that is readily available to you. We recommend you consult these knowledgeable industrial applications specialists for all of your weight measurement needs.

Please call us or visit  
[www.wtxweb.com](http://www.wtxweb.com)  
for your nearest  
Weigh-Tronix distributor.

## Avery Weigh-Tronix

Fairmont, Minnesota U.S.A.  
USA Toll-Free: 800-368-2039  
USA Phone: 507-238-4461  
[www.wtxweb.com](http://www.wtxweb.com)

Pointe Claire, Quebec Canada  
CAN Toll-Free: 800-561-9461  
CAN Phone: 514-695-0380  
[www.weigh-tronix.ca](http://www.weigh-tronix.ca)

