

# **WEIGH-TRONIX**

## **Model 3275 Medium Capacity Checkweigher**



# Model 3275 Medium Capacity Checkweigher

## Features and benefits

**Graphic weight display**—Four color weight display tells operator at a glance if weight is within range, over, or under.

**20° adjustable tilt display**—For optimum viewing angle and operating efficiency.

**Simple setup**—With a few keystrokes, you set target weight, tolerances, enter tare weight, or select unit of measure.

**Four units of measure**—Select to read in pounds, ounces, kilograms, or grams for added versatility.

## Options

**Keypad remote control**—Supervisor can control the setup values on single or multiple 3275s by locking out setup keys. Gives added security to checkweighing functions.

**Software**—Statistical, multi-setup, zone classifier, percent, and lb/oz programs available for a variety of applications.

## Specifications

### Capacities and increments:

Pounds	Ounces	Kilograms	Grams
100 x .02	1600 x .5	45 x .01	45,000 x 10
100 x .05	1600 x 1.0	45 x .02	45,000 x 20
200 x .05	3200 x 1.0	90 x .02	90,000 x 20
200 x .1	3200 x 2.0	90 x .05	90,000 x 50

### Scale dimensions:

100-lb scale:	20" W x 26.56" D x 35" H (50.8 cm x 67.46 cm x 88.9 cm)
200-lb scale:	24" W x 30.56" D x 35" H (60.96 cm x 77.62 cm x 88.9 cm)

### Weighing surface dimensions:

100-lb scale:	20" x 20" (50.8 cm x 50.8 cm)
200-lb scale:	24" x 24" (60.96 cm x 60.96 cm)

### Power requirements:

Standard: 117 VAC ( $\pm 10$ ) 50/60 Hz ( $\pm 3$  Hz), 15 watts max.

Optional: 234 VAC ( $\pm 10$ ) 50/60 Hz, 15 watts max.

### Display:

Vacuum fluorescent display. Six 0.5" high digits of weight. 45 multicolored segments for graphic display of OVER/UNDER/ACCEPT status

### Construction:

Stainless steel shroud and understructure. Plated and encapsulated Weigh Bars<sup>®</sup>. Stainless steel electronics

**Rugged electronics enclosure**—Stainless steel enclosure seals electronics from moisture and protects from damage due to impact.

**Single Weigh Bar<sup>®</sup> design**—No moving parts for low maintenance. Proven resistance to washdown. Suitable for food processing environments.

**Filtering**—Select for maximum speed when weighing environment is free from excessive vibration. Select for more stability when conditions are less than ideal.

**Extended resolution**—Standard resolution is 3,000d. Selectable to 5,000d.

**RS-232 or RS-485 outputs**—For interface with computers, printers or other data collection devices.

**Compact printers**—For printing statistical information.

**Scale Cart**—Stainless steel cart on casters. Provides stable weighing surface and easy transport of scale.

### Environment:

14° F to 104°F (-10°C to +40°C) Water washdown

### Controls:

ZERO - with AZT  
TARE - push-button or digital  
GROSS - displays gross weight when tare is entered  
PRINT - with motion inhibit  
TEST - to check all display segments  
SETUP - to adjust scale operation  
UNITS - to select unit of measure  
OVER, UNDER, and ACCEPT - to set target and tolerances

### Agencies:

USDA, UL, NTEP (Requires NTEP approved load cell option)

**Warranty:** Two-year limited warranty applies

### Weigh-Tronix

1000 Armstrong Dr.  
Fairmont, MN 56031 USA  
Telephone: 507-238-4461  
Facsimile: 507-238-4195  
e-mail: industrial@weigh-tronix.com  
www.weigh-tronix.com

### Weigh-Tronix Canada, ULC

217 Brunswick Blvd.  
Pointe Claire, QC H9R 4R7 Canada  
Telephone: 514-695-0380  
Facsimile: 514-695-6820



# WEIGH-TRONIX

## Optional 3275 Statistics Packages for Quality, Quantity and/or Process Control

### Statistics Package No. 1—Standard Deviation Program

This program allows the 3275 to operate like a standard 3275 checkweigher. In addition it allows the operator to select the number of samples to be weighed; it prints sample weights and provides analysis of the samples.

The process is simple:

1. Set target and tolerance values as usual.
2. Press SETUP key and then the TEST key. The 3275 will display the previously selected number of samples.
3. Use the OVER or UNDER keys to scroll the display to the desired sample size (0 to 999). A selection of "0" will continue to collect sample data until the print key is pressed.
4. Press ACCEPT key to enter the new sample size.
5. Begin sample weighing. When the selected sample size is reached, the following statistical information will automatically print:

The value of each weightment (the deviation from target, if selected.)

The over tolerance

The under tolerance

The accept value

The number of weights over tolerance

The number of weights under tolerance

The number of weights within tolerance

The average weight

The highest weight

The lowest weight

The standard deviation

The coefficient of variance

The number of samples taken

Sample Printout:

RESET

0.300 lb

0.312 lb

0.310 lb

0.210 lb

0.510 lb

OVER = 0.010 lb

UNDR = 0.020 lb

ACPT = 0.300 lb

OVER = 2

UNDR = 1

ACPT = 2

AVG = 0.3284 lb

HIGH = 0.510 lb

LOW = 0.210 lb

SD = 0.110

CV = 33.5%

SS = 5

RESET

Note: The 3275 does not have to be hooked to a printer at all times. It will store all information necessary to print the statistical values. Individual sample weights are printed only if the printer is connected to the scale and is set to print at all times.

Note: The features listed below are unavailable with the Standard Deviation Program.

- Remote keypad operation
- Weigh meter diagnostics
- RS-485 operation
- 1155I printer interface
- Bidirectional RS-232 option

## Statistics Package No. 2 $\bar{x}$ /R Program

With this software package, the 3275 does not operate as a checkweigher. Instead it prompts the operator to enter information necessary for calculating  $\bar{x}$  and R values.

During setup, the operator enters:

**Target value** of the item to be checked.

**Limit**, which is a single value applied equally as an over and under limit

**Sample size**, the number of weighments (2 to 300) to be taken before the 3275 automatically calculates the  $\bar{x}$  and R values and checks for trends.

**Data to print**— $\bar{x}$  and R and trend messages will always print. Operator selects whether to print individual weights from the sample.

During the sampling procedure, the scale display prompts the operator to place items on the scale. When the final sample is weighed and removed from the scale, the scale feeds the following data to the printer:

Individual weights (if selected)

$\bar{x}$  and R values

Trend message

Note: The features listed below are unavailable with the  $\bar{x}$  /R Program.

- Remote keypad operation
- Weigh meter diagnostics
- RS-485 operation
- Model 1155I Printer interface
- Bidirectional RS-232 option

Sample Printout:

```
LIMIT = 0.2 oz
TARGET = 4.0 oz
        3.5 oz
        3.9 oz
        4.0 oz
        3.6 oz

 $\bar{x}$  = 3.8 oz  R = 0.5 oz
      2 of 3
```



### Weigh-Tronix

1000 Armstrong Dr.  
Fairmont, MN 56031 USA  
Telephone: 507-238-4461  
Facsimile: 507-238-4195  
e-mail: industrial@weigh-tronix.com  
www.weigh-tronix.com

### Weigh-Tronix Canada, ULC

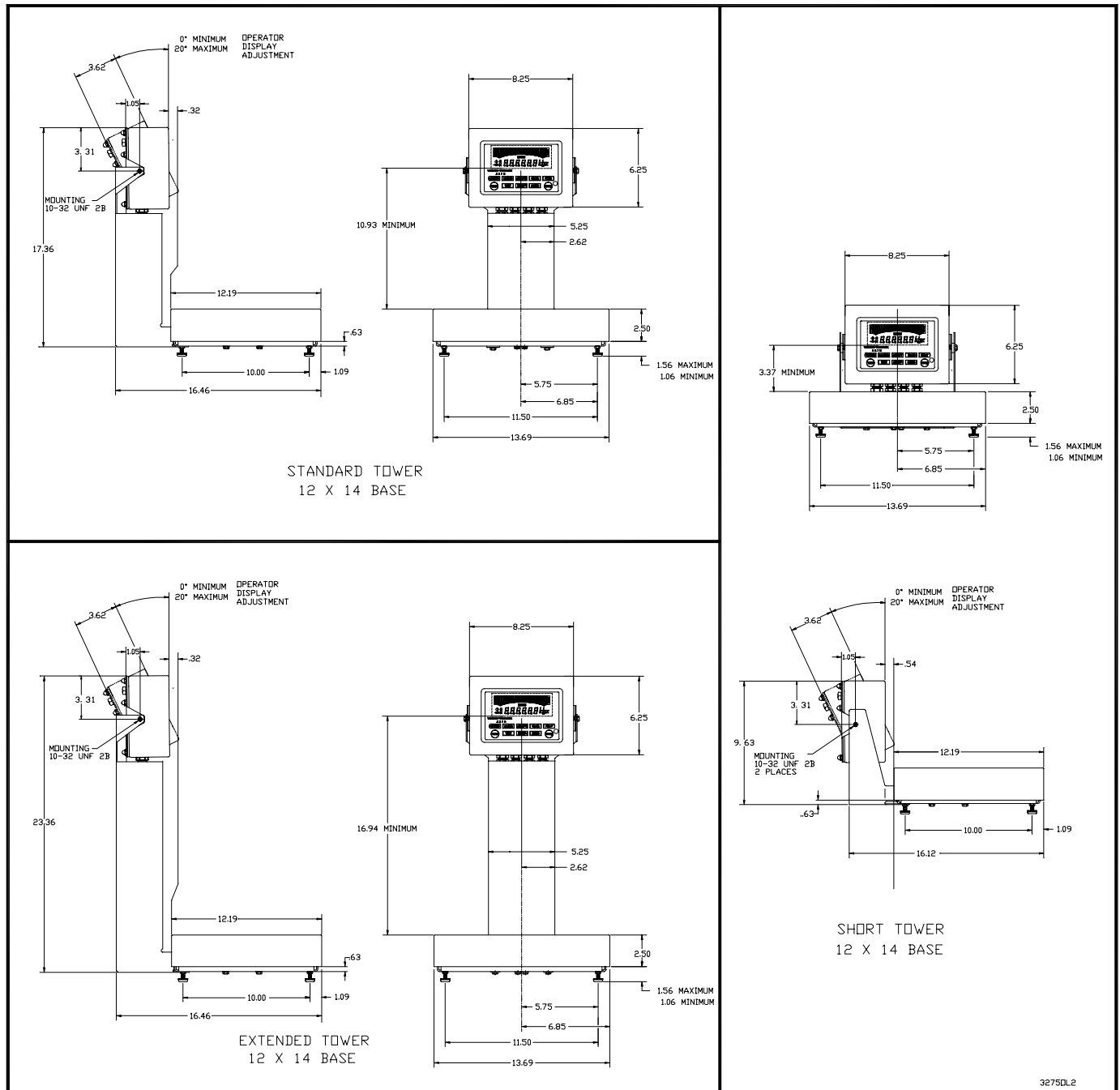
217 Brunswick Blvd.  
Pointe Claire, QC H9R 4R7 Canada  
Telephone: 514-695-0380  
Facsimile: 514-695-6820

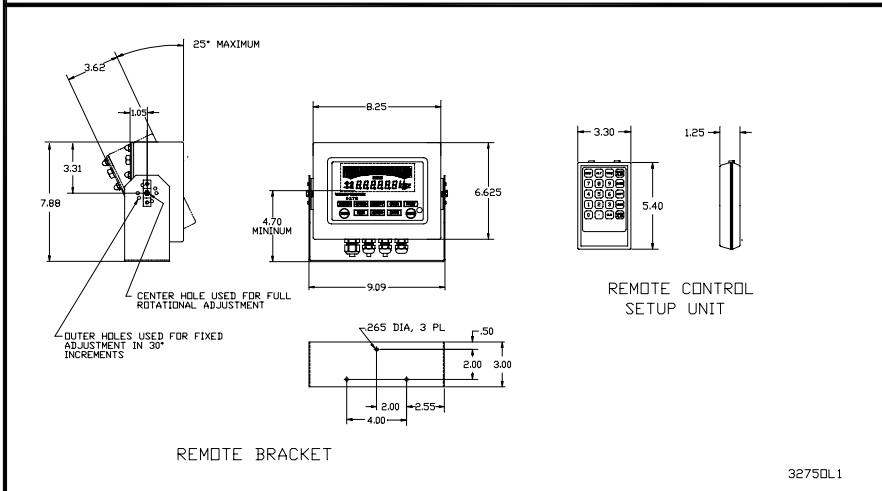
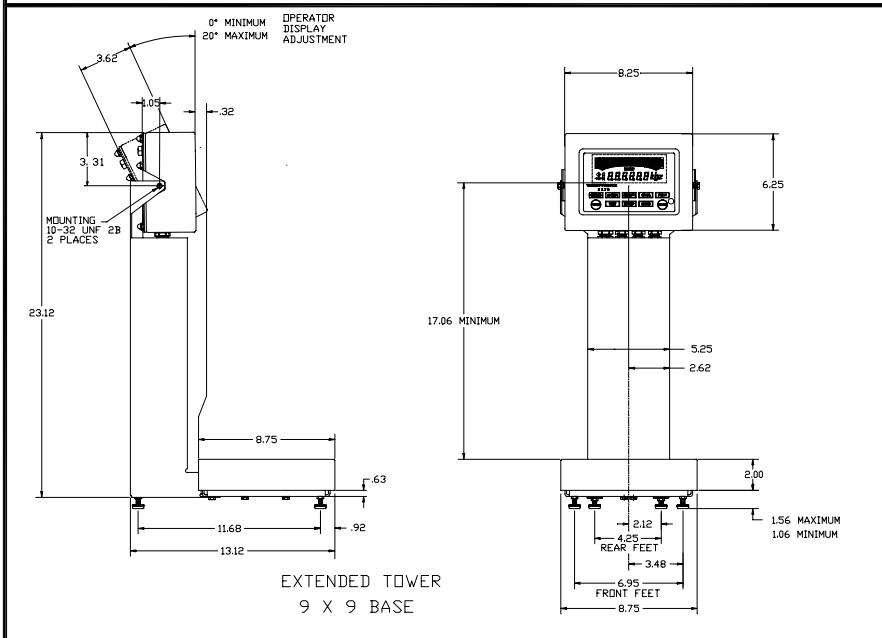
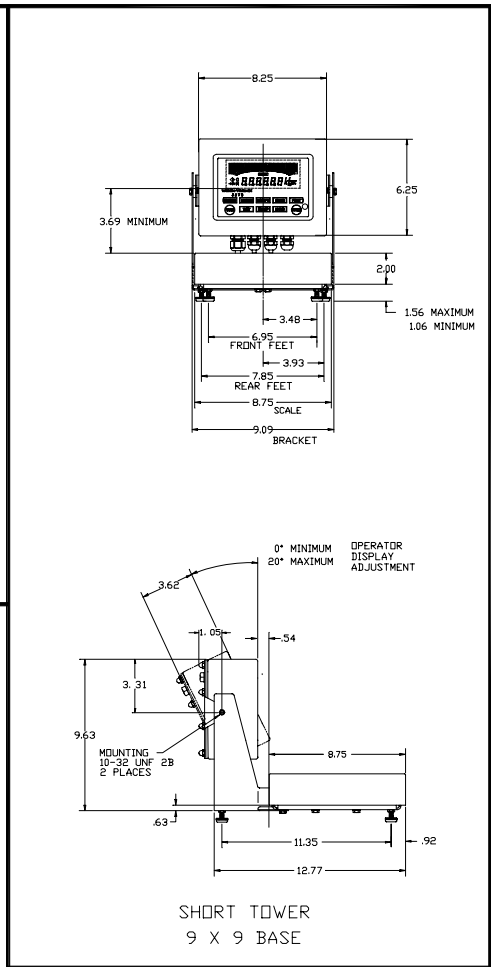
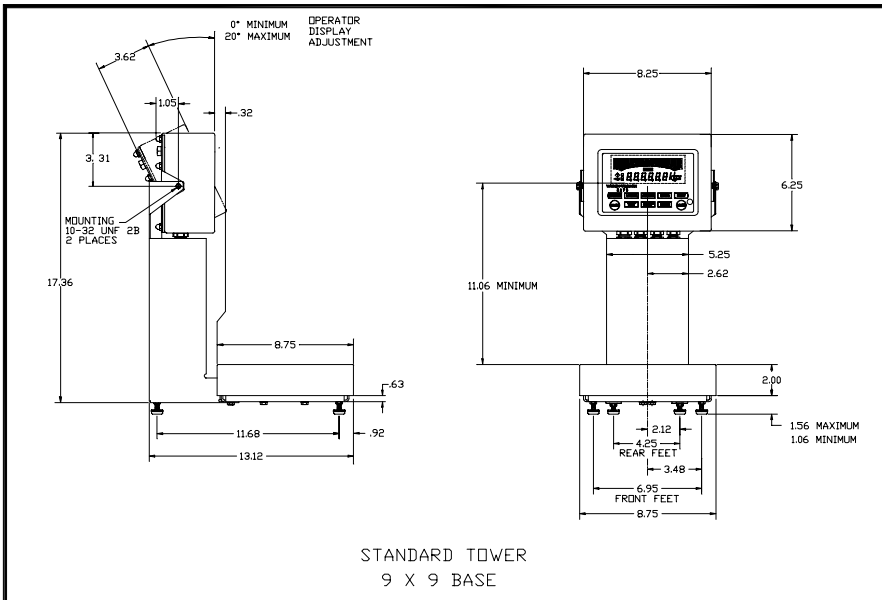
# WEIGH-TRONIX

Weighing Products & Systems

# WEIGH-TRONIX

## 3275 / QC3265 Checkweigher Dimensional Drawings





**Weigh-Tronix Inc**  
1000 Armstrong Dr  
Fairmont, MN 56031-1000, USA  
Telephone +1 507-238-4461  
Facsimile +1 507-238-4195

**Staveley Weighing & Systems  
Canada Inc**

217 Brunswick Blvd.  
Pointe Claire, Quebec, Canada H9R 4R7,  
Telephone +1 514-695-0380  
Facsimile +1 514-695-6820

**WEIGH-TRONIX**

Weighing Products & Systems